

INSTALLATION GUIDE

InnoGain 3D System

IMPORTANT REMARKS

- a. Care should be taken to avoid sharp edges which may damage the flexible outer cover.
- b. InnoGain should only be used in concrete.
- c. Always ensure the InnoGain is pulled squarely from the concrete.



1 To use the InnoGain 3D system on the formwork there has to be a hole in it of $\varnothing 14\text{mm}$ with no sharp edges. This is very important because the InnoGain MGM is tapered $\varnothing 14-14,5$ so the MGM has to be pressed a little bit through the hole of the formwork.

2 For the first positioning of the InnoGain 3D block. Use InnoWax on the InnoGain MGM for protection then place it in the InnoGain 3D block.

3 Then push the InnoGain MGM in the hole of the formwork. The Magnetic InnoGain 3D Block will then automatically stick on the formwork.

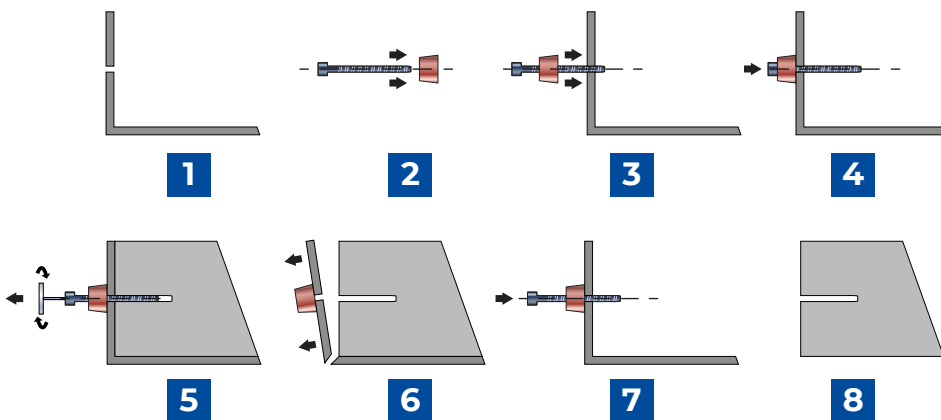
4 Check if the InnoGain MGM is completely pressed on the magnet block so the full length of the InnoGain will be realized in the concrete.

5 After casting and when the concrete is cured you remove the InnoGain MGM.

6 The InnoGain block stays on the formwork.

7 When the formwork is empty you can push the InnoGain MGM back in the 3D block again for the next casting.

8 Result of the InnoGain 3D system is a clean, dust free profiled tapered hole.



Seal the remaining holes in concrete with Innogain MB cover caps if required.
Fill the recesses to manufacture's specifications with an approved Chemical Mortar. Install the bars in the recess as per the Chemical mortar manufacturer's instructions. Once complete, the starter bars are ready for use.

Issue 2 - 02 2019

IMPORTANT: Directions for use are given for guidance only and are not intended to form part of any contract. They should be varied or adapted to suit your particular materials or conditions of use. Goods supplied by the company are made to approved standards from the highest quality raw materials but no warranty or guarantee is given as to their suitability for any particular purpose or application, and no liability is accepted for any loss or damage arising directly or indirectly from the use of the Company's products irrespective of any information given to us as to intended use of such products. It is therefore recommended that prospective users should test a sample of this product under their own conditions to satisfy themselves that the product is suitable for the purpose intended.



An innovation brought to market
by Performance Technology.

0161 447 8320
www.InnoGain.co.uk